

## Communications & Power Industries Triode



The ML-7003A is a ruggedized shielded-grid triode capable of withstanding severe conditions of shock and vibration while delivering a peak pulse power output of 2.5 MW in switch tube service. The tube is rated for 90 amperes peak pulse cathode current and can hold off 45 kVdc plate voltage.

### FEATURES:

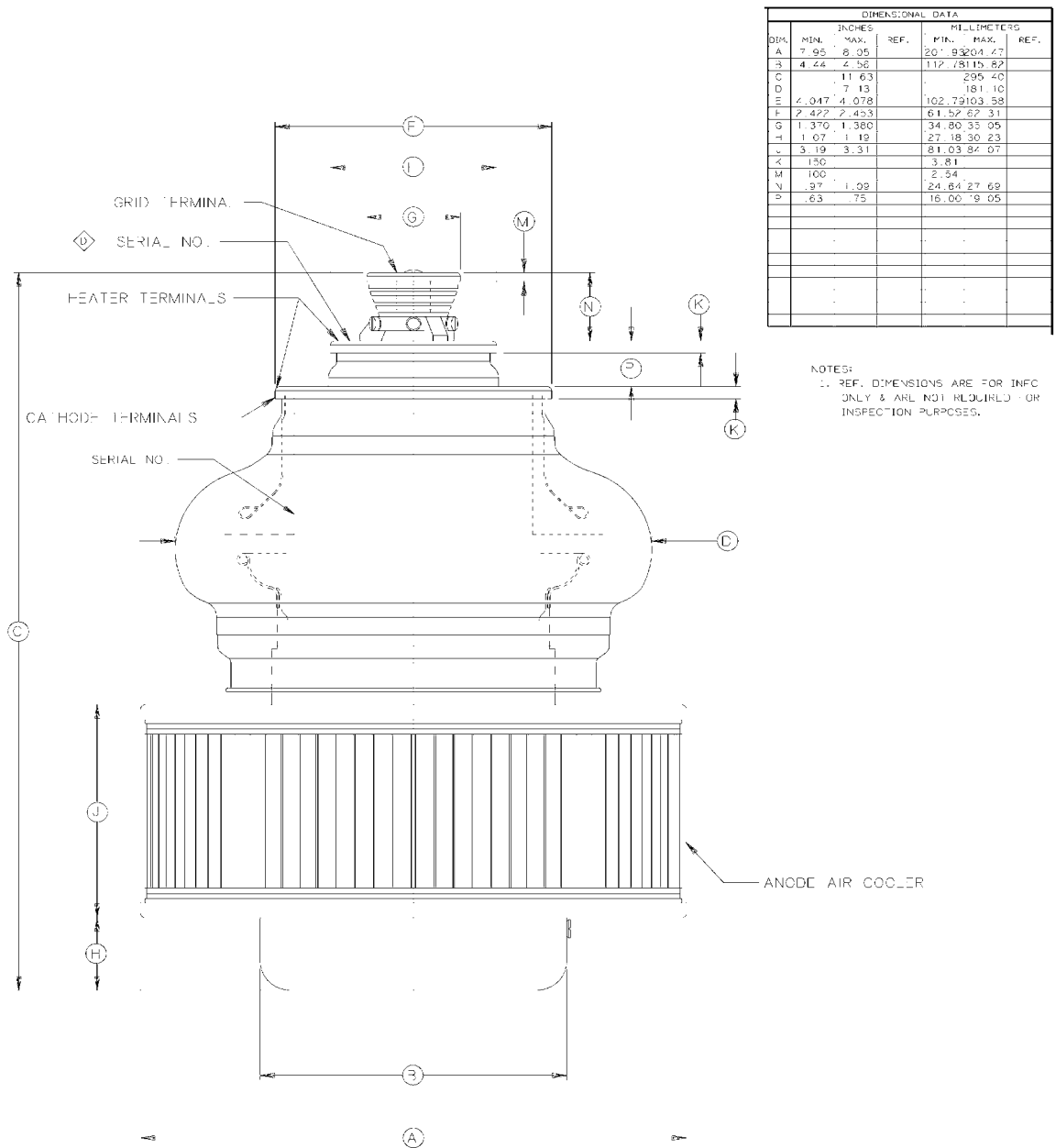
Filament Voltage:	6.0 Volts
Filament Current:	60 Amps
Filament Starting Current, Max:	300 Amps
Amplification factor:	200
Filament/cathode:	Oxide Coated
Voltage:	--- Volts
Current:	--- Amps
Capacitance: Grounded cathode	
Input:	--- pF
Output:	--- pF
Feedthrough:	--- pF
Capacitance: Grounded grid	
Input:	2.0 pF
Output:	250.0 pF
Feedthrough:	22.0 pF
Cooling:	Forced Air
Base:	---
Air Socket:	---
Air Chimney:	---
Boiler:	---
Length:	11.63 in; 295.50 mm
Diameter:	8.05 in; 204.47 mm
Weight:	27 lbs; 12 kg

### BENEFITS:

- Worldwide brand name recognition
- Over 85 years technical expertise

### APPLICATIONS:

- Radar



With a history of producing high quality products, we can help you with your triode.

Contact us at [MPPMarketing@cpii.com](mailto:MPPMarketing@cpii.com) or call us at +1 650-846-2800. The data should be used for basic information only.

Formal, controlled specifications may be obtained from CPI for use in equipment design.



**Microwave Power  
 Products Division**  
 811 Hansen Way  
 Palo Alto, California  
 USA 94304

tel +1 650-846-2800  
 fax +1 650-856-0705  
 email [MPPMarketing@cpii.com](mailto:MPPMarketing@cpii.com)  
 web [www.cpii.com/MPP](http://www.cpii.com/MPP)

For more detailed information, please refer to the corresponding CPI technical description if one has been published, or contact CPI. Specifications may change without notice as a result of additional data or product refinement. Please contact CPI before using this information for system design.

©2020 Communications & Power Industries LLC.  
 Company proprietary: use and reproduction is strictly prohibited without written authorization from CPI.